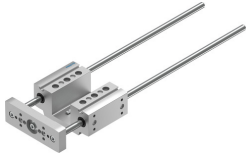


# Guide unit EAGF-P1-KF-25-300

Part number: 3192951

FESTO



## Data sheet

Feature	Value
Size	25
Stroke	300 mm
Reversing backlash	0 µm
Type code	EAGF
Mounting position	Any
Guide	Recirculating ball bearing guide
Structural design	Guide
Max. acceleration	25 m/s <sup>2</sup>
Max. speed	1 m/s
Corrosion resistance class (CRC)	1 - Low corrosion stress
Degree of protection	IP40
Ambient temperature	0 °C ... 50 °C
Max. force F <sub>y</sub>	320 N
Max. force F <sub>y</sub> static	415 N
Max. force F <sub>z</sub>	320 N
Max. force F <sub>z</sub> static	415 N
Max. torque M <sub>x</sub>	15 Nm
Max. static moment M <sub>x</sub>	19 Nm
Max. torque M <sub>y</sub>	10 Nm
Max. static moment M <sub>y</sub>	12 Nm
Max. torque M <sub>z</sub>	10 Nm
Max. static moment M <sub>z</sub>	12 Nm
Displacement force	4 N
Moving mass at 0 mm stroke	300 g
Additional weight per 10 mm stroke	12 g
Basic weight with 0 mm stroke	1080 g
Additional moving mass per 10 mm stroke	12 g
Center of gravity of moving mass with 0 mm stroke	30 mm
Center of gravity of moving mass with 10 mm stroke	4.5 mm
Type of mounting	With internal thread
Note on materials	Free of copper and PTFE RoHS-compliant
Material of guide component	Tempered steel Hard-chrome-plated
Housing material	Wrought aluminum alloy Anodized

Feature	Value
Material of yoke plate	Wrought aluminum alloy Anodized